



WEEKLY TAILGATE: POISONOUS PLANTS, BITING AND STINGING INSECTS

Week of

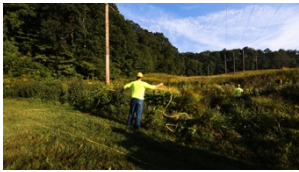
CORPORATE MESSAGE

Blank area for corporate message.

POISONOUS PLANTS, BITING AND STINGING INSECTS



When performing pre-job inspections, look for signs of critters, such as wasp nests, cavities that could house bees, hornets, spiders or squirrels or various habitats where snakes could be.



Watch out for ant hills and tall grassy areas where ticks could be present.



Wear long sleeve shirts, long pants and gloves when working around plants that are poisonous upon contact.



If poisonous plants will interfere with tree care operations, ask your crew leader for instructions on how to avoid or eradicate the poisonous plants.

SAFETY VIDEOS

English: vimeo.com/townsendcorp/28te

Spanish: vimeo.com/townsendcorp/28ts

GOALS REGIONAL/LOCAL OPERATIONS

Last Week

This Week

IMPORTANT REMINDER

DAILY SAFETY NUGGETS

MONDAY

What is the best way to remove poison ivy from a tree that must be climbed? First of all, wear long sleeved protective clothing and gloves. Cut the vine close to the ground and return after the vine has died.

TUESDAY

TRUE/FALSE... Bees, hornets & wasps kill more people in the U.S. each year than any other insect or animal. TRUE

WEDNESDAY

TRUE/FALSE... Urushiol (the oil in poison ivy) should be washed off with soap within five minutes of contact. FALSE- The oil is actually spread by using soap. Use the cleanser provided in our first aid kits or simply cold water if the cleanser is not available

THURSDAY

TRUE/FALSE... Poison Ivy oil will cling to your clothing if you walk through it and can cause a rash later. TRUE

FRIDAY

What type of area would ticks be most likely to be found? Tall grass and meadows.

SATURDAY

What phrase is typically used to warn of poison ivy and other poisonous plants? "Leaves of three; let it be."

DRIVE SAFETY TIP

Inspect Your Vehicle Safe"

Vehicle maintenance isn't just an important way to extend your car's life or a DOT requirement -- it's a **MAJOR SAFETY ISSUE!** Many maintenance issues can be discovered and resolved through Daily Vehicle Inspections. Let's inspect our way to safe vehicle operations!



POISONOUS PLANTS, BITING AND STINGING INSECTS

Weekly Tailgate Sign-in

Company: _____ Location: _____

Supervisor: _____ Date: _____

- | | |
|-----------|-----------|
| 1. _____ | 21. _____ |
| 2. _____ | 22. _____ |
| 3. _____ | 23. _____ |
| 4. _____ | 24. _____ |
| 5. _____ | 25. _____ |
| 6. _____ | 26. _____ |
| 7. _____ | 27. _____ |
| 8. _____ | 28. _____ |
| 9. _____ | 29. _____ |
| 10. _____ | 30. _____ |
| 11. _____ | 31. _____ |
| 12. _____ | 32. _____ |
| 13. _____ | 33. _____ |
| 14. _____ | 34. _____ |
| 15. _____ | 35. _____ |
| 16. _____ | 36. _____ |
| 17. _____ | 37. _____ |
| 18. _____ | 38. _____ |
| 19. _____ | 39. _____ |
| 20. _____ | 40. _____ |